

ANALYTICAL REPORT

Cannabinoids

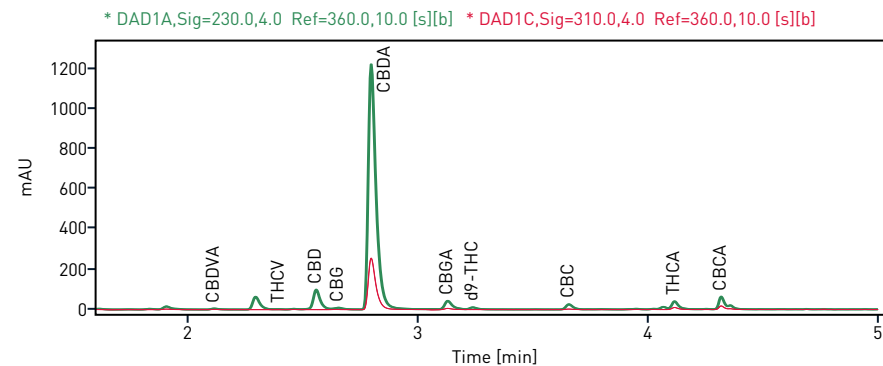
SAMPLE: 10283_Bluberry_<16mm_lowcan

TOTAL CONTENT*

CBD	CBG	THC	RATIOS	
3.12 %	0.14 %	0.14 %	CBD/THC	CBG/THC
			21.55	0.97

Name	RT [min]	Measured amount [mg]	Calculated concentration [%] w/w
CBC	3.660	0.01	0.04
CBCA	4.318	0.05	0.22
CBD	2.558	0.09	0.40
CBDA	2.808	0.67	3.09
CBDB	2.243	0.00	0.00
CBDV	1.753	0.00	0.00
CBDVA	2.106	0.00	0.01
CBG	2.656	0.01	0.04
CBGA	3.126	0.02	0.11
CBN	3.017	0.00	0.00
d8-THC	3.360	0.00	0.00
d9-THC	3.232	0.01	0.06
THCA	4.114	0.02	0.10
THCV	2.390	0.00	0.01
THCVA	3.329	0.00	0.00

Relevant levels for CoAs: LOD = 0.025% LOQ = 0.05%; Below LOQ = "n.d." in CoA



Description:

Acq. method: Cannabinoids EVO C18
Analytical method: HPLC-DAD
Date of analysis: 2023-07-05 15:12:38+02:00

Dr. Julian Koschmieder

Head of QC Analytics and QM
 Laufenburg, Switzerland

Puregene AG warrants that at the time of release of the current measurements, this sample conformed to the information contained in this report. The results of the examination refer exclusively to the investigated test material. All information has been compiled in close accordance to GLP guidelines (Directive 2004/100/EC of the European Parliament) where ever possible. In direct comparison with other methods of analysis or laboratories, the result may differ. Puregene AG can not be held responsible for decisions made on the basis of the presented data. This report shall not be reproduced or published without the consent of Puregene AG.* Total CBD=(CBDAx0.877)+CBD; Total CBG=(CBGAx0.877)+CBG; Total THC=(THCAx0.877)+d9-THC